

# SAFE PEOPLE FLOW<sup>®</sup> FOR HORIZONTAL SPEED



# SAFE PEOPLE FLOW® FOR HORIZONTAL SPEED

The KONE TransitMaster™ 165 is a horizontal autowalk designed in particular for airports and busy hubs, where people need to move quickly and conveniently between different areas in order to arrive to their destination faster.

Applications	Public transportation, mainly airports
Environment	Indoor
Lenght	20–100 m
Inclination	0–6°
Group Arrangement	Single / Parallel in same running direction / Parallel in opposite running direction
Pallet width	1000 mm / 1200 mm / 1400 mm
Speed	0.5 / 0.65 / 0.75 m/s
Truss deflection	1/1000 and 1/1500
Gearbox type	Worm gear (88% efficiency) Helical gear (92% efficiency)
Drive location	Outside pallet band
Pallet chain type	Inside roller Ø75 x 23.5 mm
Controller	KONE 501B
Power supply	50Hz / 380V / 220V 50Hz / 400V / 230V 50Hz / 415V / 240V 60Hz / 380V / 110V 60Hz / 220V / 110V
Operation mode	Standby speed Standby speed and/or automatic start/stop
Code compliance	EN1115-1: 2008 +A1:2010/EN1115-1: 2017/GB16899-2011/Local Codes (Australia /Taiwan/Russia/UK)





## KEY SPECIFICATIONS

Symmetric  
designTravel length  
20–100 mPallet width  
1000 / 1200 /  
1400 mmIndoor  
environmentSpeed  
0.5 / 0.65 / 0.75 m/sPeople Flow Capacity  
up to 6600 people/h

Front plate	Black plastic
	Stainless steel
Balustrade	Safety Glass panels 10 mm
	Balustrade height: 1000 mm
Decking	Brushed satin stainless steel
	Silver powder-coated carbon steel (RAL9007)
	Natural anodized aluminum
Skirt	Black sheet steel with or without anti-friction coating
	Stainless steel with or without anti-friction coating
Access cover	Ribbed aluminum with black grooves
	Ribbed aluminum natural color
	Aluminum with black painted stainless steel surface
	Aluminum with stainless steel surface
Pallet	Silver painted aluminum (Grinded surface R10)
	Black painted aluminum (Grinded surface R10)
	Natural aluminum (Grinded surface R10)
Pallet demarcation	Without
	Yellow painted on 2 sides
Comb segment	Aluminum
	Aluminum with yellow coating (RAL 1023)
Lighting	Without
	LED continuous (different colors) for handrail and skirt
	LED spot lights (white) for skirt
	LED static comb light (different colors)
	LED traffic lights
LED underpallet lighting (green)	

# SAFETY = PEACE OF MIND

## SKIRT PANELS

coated with anti-friction coating minimize drag and reduce possibility of entrapments between skirt and pallets.

## COMB PLATE IMPACT DEVICE SWITCHES

minimize the risk of entrapment in comb plate areas.

## KONE 24/7 CONNECTED SERVICES

helps you to see the status of the autowalk in real time to ensure safe operation.

## ANTI SLIP REQUIREMENT

R10 anti-slip grade pallet surface reduces the chance of passengers slipping.

## 400 MM LONG PALLETS

increase the ride comfort of passengers during their travel experience.

## FIRE SAFETY

maximised with halogen-free and fire-resistant wiring.

## EMERGENCY STOP BUTTONS

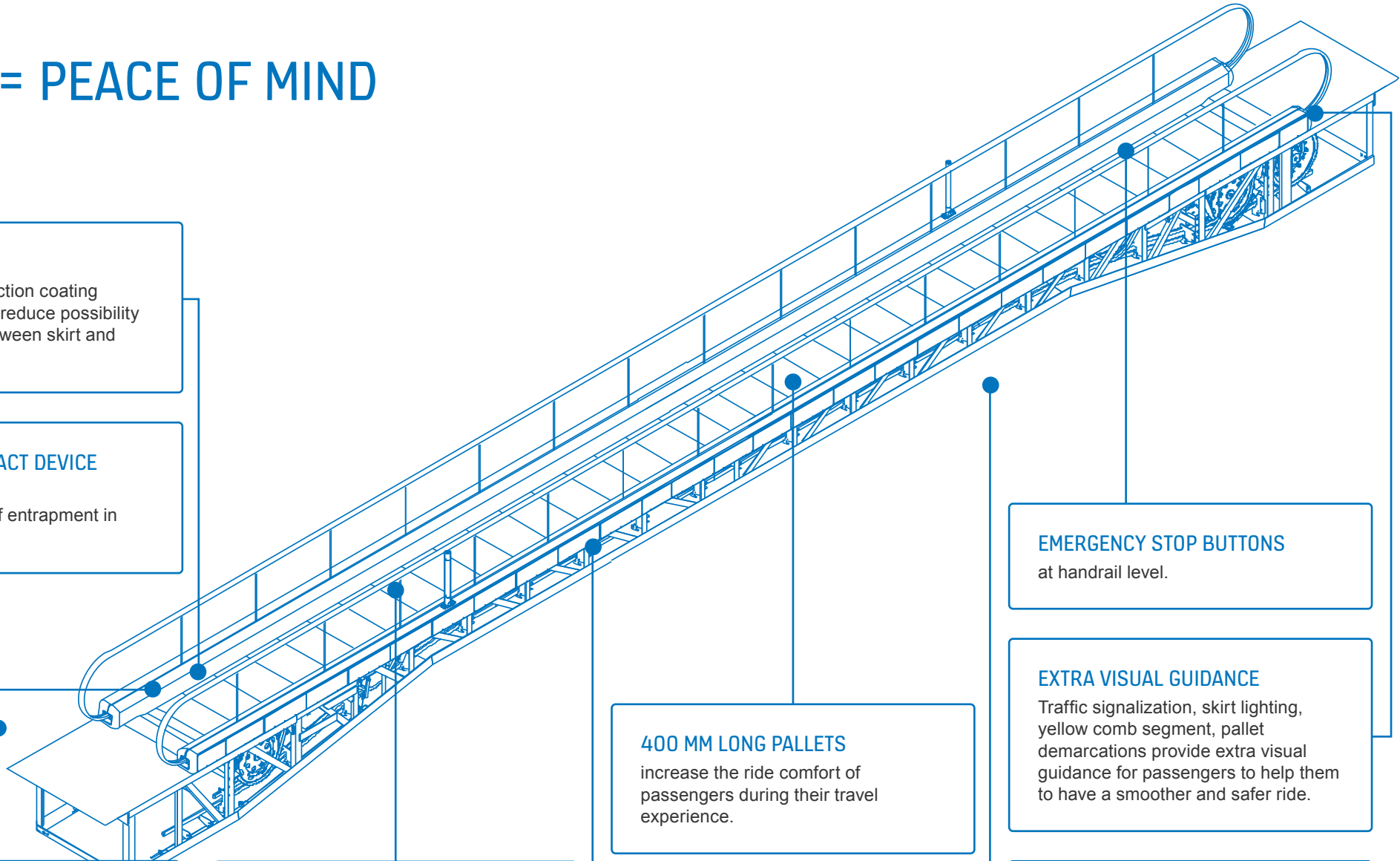
at handrail level.

## EXTRA VISUAL GUIDANCE

Traffic signalization, skirt lighting, yellow comb segment, pallet demarcations provide extra visual guidance for passengers to help them to have a smoother and safer ride.

## AUDIBLE ALARMS

provide clear guidance on autowalk travel directions and enlarge users attention.



# REDUCED ENVIRONMENTAL IMPACT

Installing an eco-efficient KONE autowalk solution can help in achieving green building accreditations such as LEED or BREEAM certification.



## KONE RECOGNIZED AS A TOP PERFORMER IN 2018 CDP CLIMATE CHANGE REPORTING

We are proud to once again be among the top performers in CDP climate change reporting with a score of A- for 2018.

KONE has received an A or A- score for six consecutive years.

## KONE RANKED AMONG THE TOP 100 MOST SUSTAINABLE COMPANIES IN THE WORLD

- KONE ranked 43rd in Corporate Knights' 2019 Global 100 Most Sustainable Corporations in the World
  - 2nd among its 443 global category peers in the "Machinery Manufacturing"
  - Only elevator and escalator industry company in the Top 100 ranking
- Top performer in environmental performance and social responsibility, such as employee retention and board gender diversity
- The Global 100 ranking is based on a rigorous analysis of 7,500 companies with revenues of over USD 1 billion

## BREEAM CERTIFICATION

One credit can be achieved by fulfilling the following requirement:

Autowalk is fitted with a passenger-sensing device for automated operation, so it operates in standby mode when there is no passenger demand.

## LEED CERTIFICATION

KONE solutions can also contribute to several LEED certification categories.

## ECO-EFFICIENT AUTOWALK

KONE TransitMaster™ 165 is able to achieve A+++ energy performance certificate based on ISO standard.

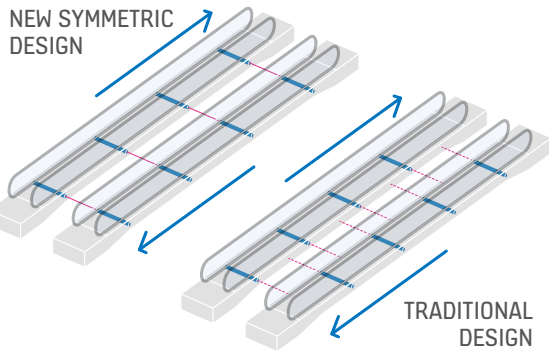
## 4 WAYS TO MAKE YOUR AUTOWALK MORE ECO-EFFICIENT:

- High efficiency motors minimize energy consumption at full speed
- Lubrication-free pallet chain means no oil, a cleaner autowalk and environment, reduced fire hazard, simpler cleaning and easier maintenance
- Long-lasting led lighting is up to 80% more efficient than fluorescent lighting and lasts up to 10 times longer
- Eco-efficient operational modes save energy by slowing down or stopping the autowalk completely when traffic is low. For example, when an autowalk is empty, energy consumption is further reduced by slow stand-by speed and furthermore by stopping the autowalk

# HIGH QUALITY DESIGN TO MATCH YOUR BUILDING REQUIREMENTS

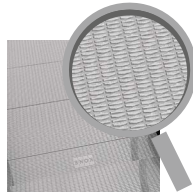
## SYMMETRIC DESIGN

Symmetric design means that two parallel autowalks running in opposite directions have the same positions for intermediate supports. This saves your engineering time, installation time and costs of additional support beams.

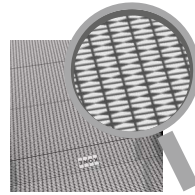


Structural elements and supports are aligned even if parallel autowalks are running in different directions.

## ACCESS COVERS



Aluminum with stainless steel surface



Aluminum with black painted stainless steel surface



Ribbed aluminum natural color



Ribbed aluminum with black grooves

## SKIRTING

### SKIRT



Brushed satin stainless steel skirt with clear anti-friction coating

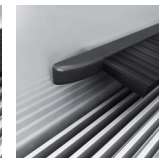


Sheet steel skirt with black anti-friction coating

### SKIRT BRUSH HOLDER



Clear anodized aluminum



Black anodized aluminum

## PALLETS



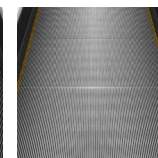
Natural aluminum



Silver painted aluminum

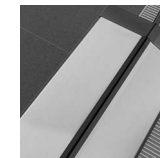


Black painted aluminum

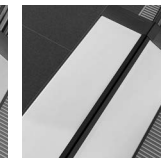


Yellow painted demarcation on two sides of pallet

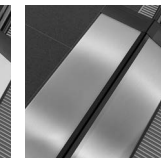
## DECKING



Silver powder-coated carbon steel (RAL9007)

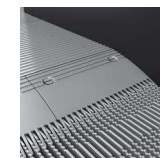


Natural anodized aluminum

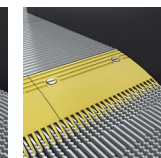


Brushed satin stainless steel

## COMB



Aluminum comb segments



Aluminum comb segments with yellow coating

## FRONT PLATE



Stainless Steel

Black plastic

## BALUSTRADE



Glass balustrade up to 60 m autowalk length

Glass balustrade from 60 to 100 m autowalk length

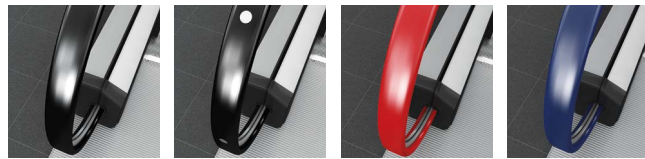
## ADDITIONAL OPTIONS



Additional emergency stop button

Diagnostic display

## HANDRAILS

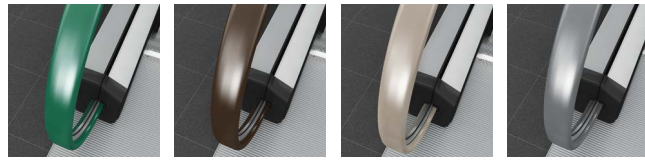


Black

Black with white demarcation inserts

Red

Blue



Green

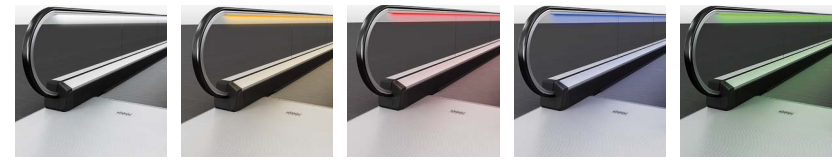
Brown

Beige

Grey

## LIGHTING

### CONTINUOUS LED HANDRAIL LIGHTING (\*for units with length less than 60 m)



White

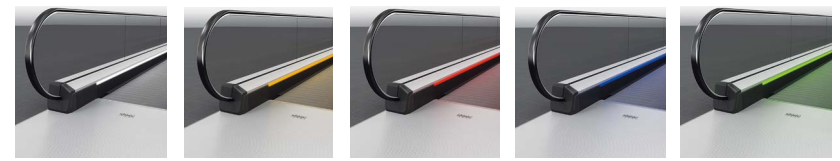
Yellow

Red

Blue

Green

### CONTINUOUS LED SKIRT LIGHTING



White

Yellow

Red

Blue

Green

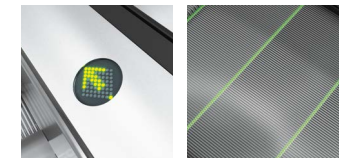
### LED LIGHTING



LED skirt spot lighting (only in white)

LED comb lighting (available in white, yellow, red, blue, and green)

### ADDITIONAL LIGHTING



LED traffic lights located in the decking

Pallet demarcation lighting

KONE provides innovative and eco-efficient solutions for elevators, escalators, automatic building doors and the systems that integrate them with today's intelligent buildings.

We support our customers every step of the way; from design, manufacturing and installation to maintenance and modernization. KONE is a global leader in helping our customers manage the smooth flow of people and goods throughout their buildings.

Our commitment to customers is present in all KONE solutions. This makes us a reliable partner throughout the life cycle of the building. We challenge the conventional wisdom of the industry. We are fast, flexible, and we have a well-deserved reputation as a technology leader, with such innovations as KONE MonoSpace®, KONE NanoSpace™ and KONE UltraRope®.

KONE employs close to 57,000 dedicated experts to serve you globally and locally.

## KONE CORPORATION

### Corporate offices

Keilasatama 3  
P.O. Box 7  
FI-02151 Espoo  
Finland  
Tel. +358 (0)204 751

[www.kone.com](http://www.kone.com)

This publication is for general informational purposes only and we reserve the right at any time to alter the product design and specifications. No statement in this publication shall be construed as a warranty or condition, express or implied, as to any product, its fitness for any particular purpose, merchantability, quality or representation of the terms of any purchase agreement. Minor differences between printed and actual colors may exist. KONE Care® and People Flow® are registered trademarks of KONE Corporation. Copyright © 2020 KONE Corporation.